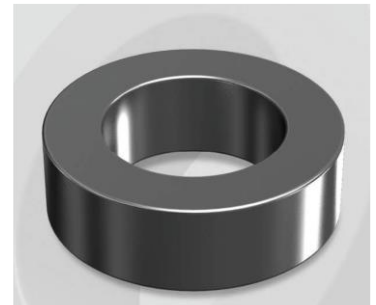


CK234060G

OD : 234

Electrical Characteristics

Material	Permeability (μ)	AL \pm 8% (nH/N ²)	DCB (% min) @ 100 Oe	Coreloss (mW/cm ² , max) @50kHz, 1000G
Mega Flux	60	51	59.8	710



Core Dimensions

Dimensions		Uncoated		Coated		Color	Packaging
		(mm)	(inch)	(mm)	(inch)		
OD	(Max)	23.57	0.928	24.30	0.957	Black	Box Qty = 750 pcs
ID	(min)	14.40	0.567	13.77	0.542		
HT	(max)	8.89	0.350	9.70	0.382		

Physical Characteristics

Cross Section (A)	Path Length (l)	Window Area (W _a)	Volume (V)	Breakdown Voltage (Vac)
0.3880 cm ²	5.88 cm	1.490 cm ²	2.2814 cm ³	1,000
0.06014 in ²	2.315 in	294,060 cmil	0.1392 in ³	

Winding Information

0% Winding length/turn (cm)		
2.993		
40% winding factor Surface Area (cm ²)		
26.78		
40% Wound Di.(mm)		
OD	ID	HT
27.76	9.02	13.81

Typical DC Bias Performance

